

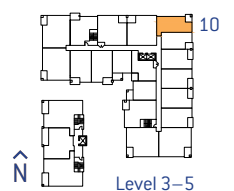
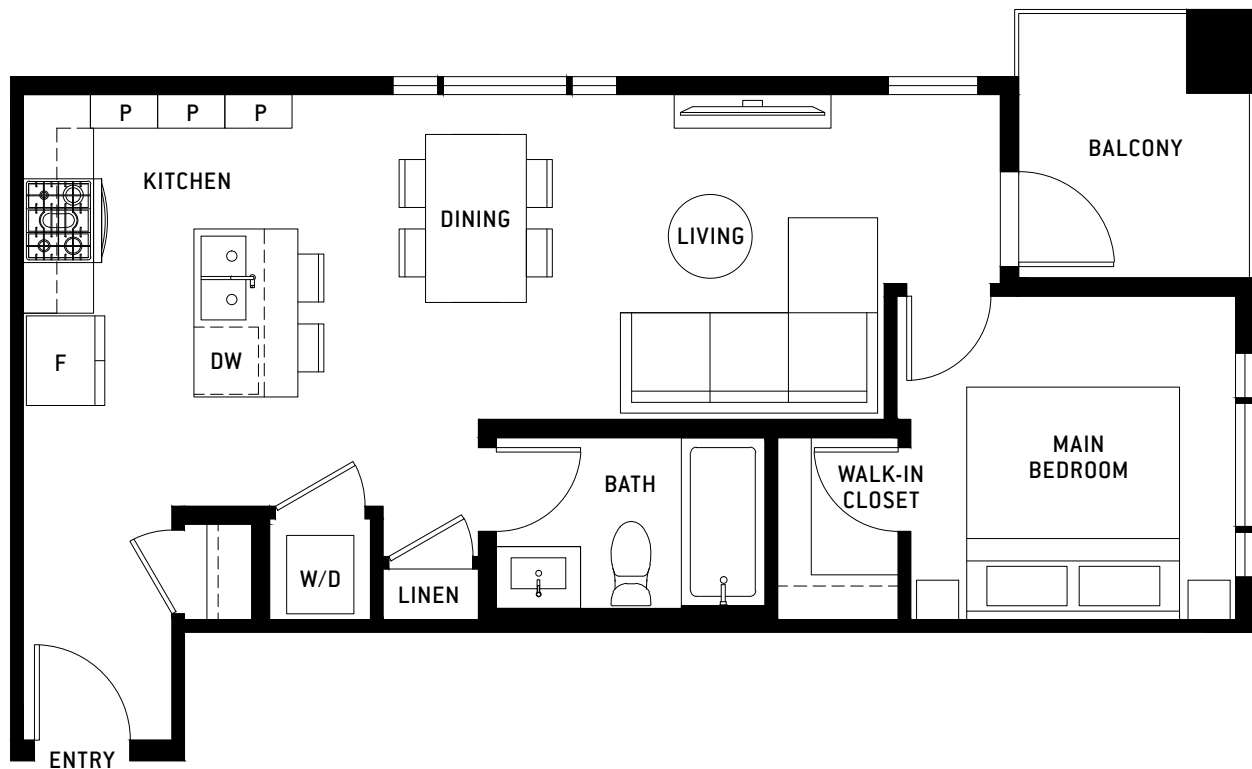
BASTILLE

PLAN A 5

1 Bed, 1 Bath

Interior: 592 Sq Ft / Exterior: 55 Sq Ft / Total: 647 Sq Ft

FRENCH-INSPIRED LIVING



PORTE.CA/BASTILLE

The developer reserves the right to modify or change plans, specifications, finishes and features without notice. Sizes are approximate and subject to change. E&OE.

MAGNUM

porte
homes

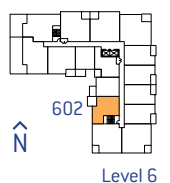
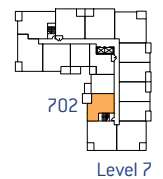
BASTILLE

PLAN A 6

1 Bed, 1 Bath

Interior: 614 Sq Ft / Exterior: 97 Sq Ft / Total: 711 Sq Ft

FRENCH-INSPIRED LIVING



PORTE.CA/BASTILLE

The developer reserves the right to modify or change plans, specifications, finishes and features without notice. Sizes are approximate and subject to change. E&OE.

MAGNUM

porte
homes

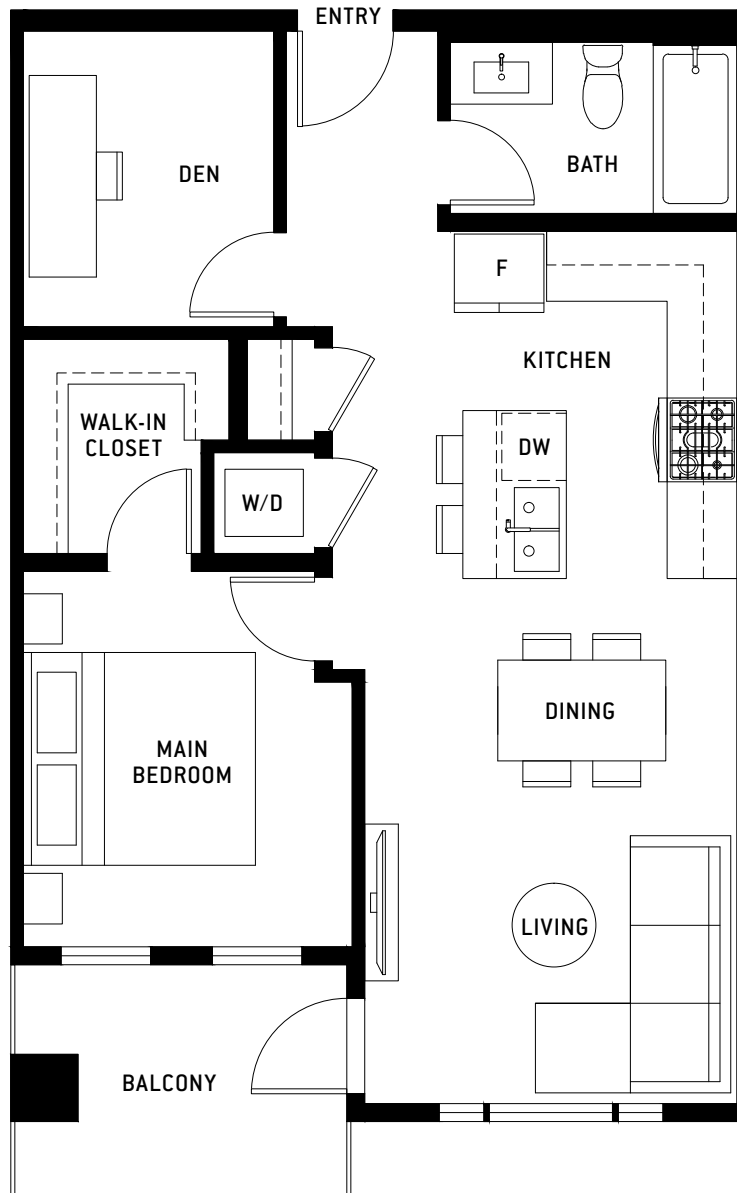
BASTILLE

PLAN B3

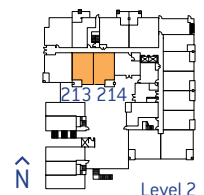
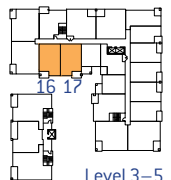
1 Bed + Den, 1 Bath

Interior: 678 Sq Ft / Exterior: 53–69 Sq Ft / Total: 731–747 Sq Ft

FRENCH-INSPIRED LIVING



214, 317, 417, 517 are mirror plans



PORTE.CA/BASTILLE

The developer reserves the right to modify or change plans, specifications, finishes and features without notice. Sizes are approximate and subject to change. E&OE.

MAGNUM

porte
homes

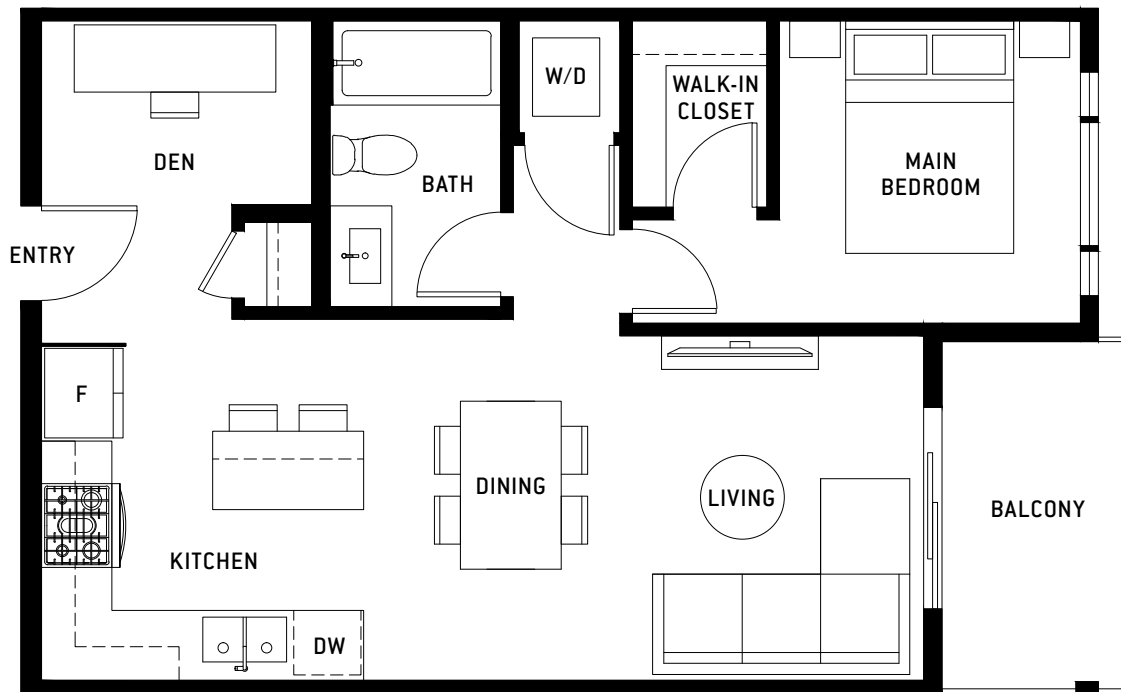
BASTILLE

PLAN B 4

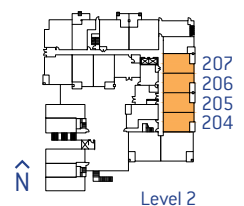
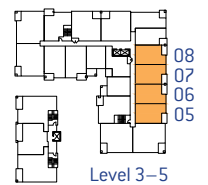
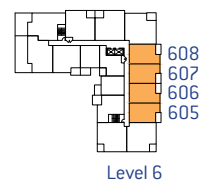
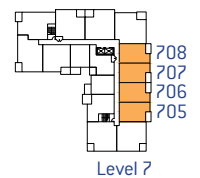
1 Bed + Den, 1 Bath

Interior: 603 Sq Ft / Exterior: 58 Sq Ft / Total: 661 Sq Ft

FRENCH-INSPIRED LIVING



204, 207, 306, 308, 406, 408, 506, 508, 606, 608, 706, 708 are mirror plans



PORTE.CA/BASTILLE

The developer reserves the right to modify or change plans, specifications, finishes and features without notice. Sizes are approximate and subject to change. E&OE.

MAGNUM

porte
homes

BASTILLE

PLAN D 3

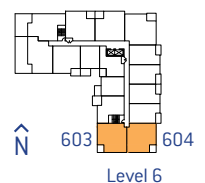
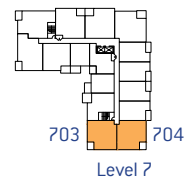
2 Bed + Den, 2 Bath

Interior: 872 Sq Ft / Exterior: 56 Sq Ft / Total: 928 Sq Ft

FRENCH-INSPIRED LIVING



603, 703 are mirror plans



PORTE.CA/BASTILLE

The developer reserves the right to modify or change plans, specifications, finishes and features without notice. Sizes are approximate and subject to change. E&OE.

MAGNUM

porte
homes

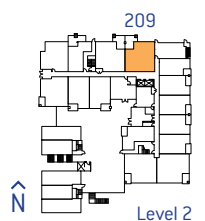
BASTILLE

PLAN E4 *

2 Bed + Den, 2 Bath

Interior: 883 Sq Ft / Exterior: 152 Sq Ft / Total: 1,035 Sq Ft

FRENCH-INSPIRED LIVING



PORTE.CA/BASTILLE

The developer reserves the right to modify or change plans, specifications, finishes and features without notice. Sizes are approximate and subject to change. E&OE.

MAGNUM

porte
homes

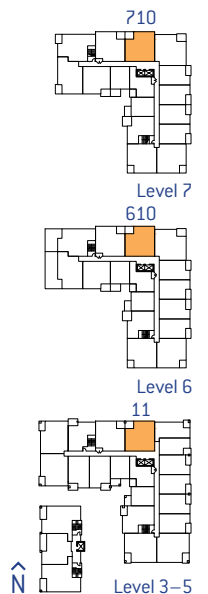
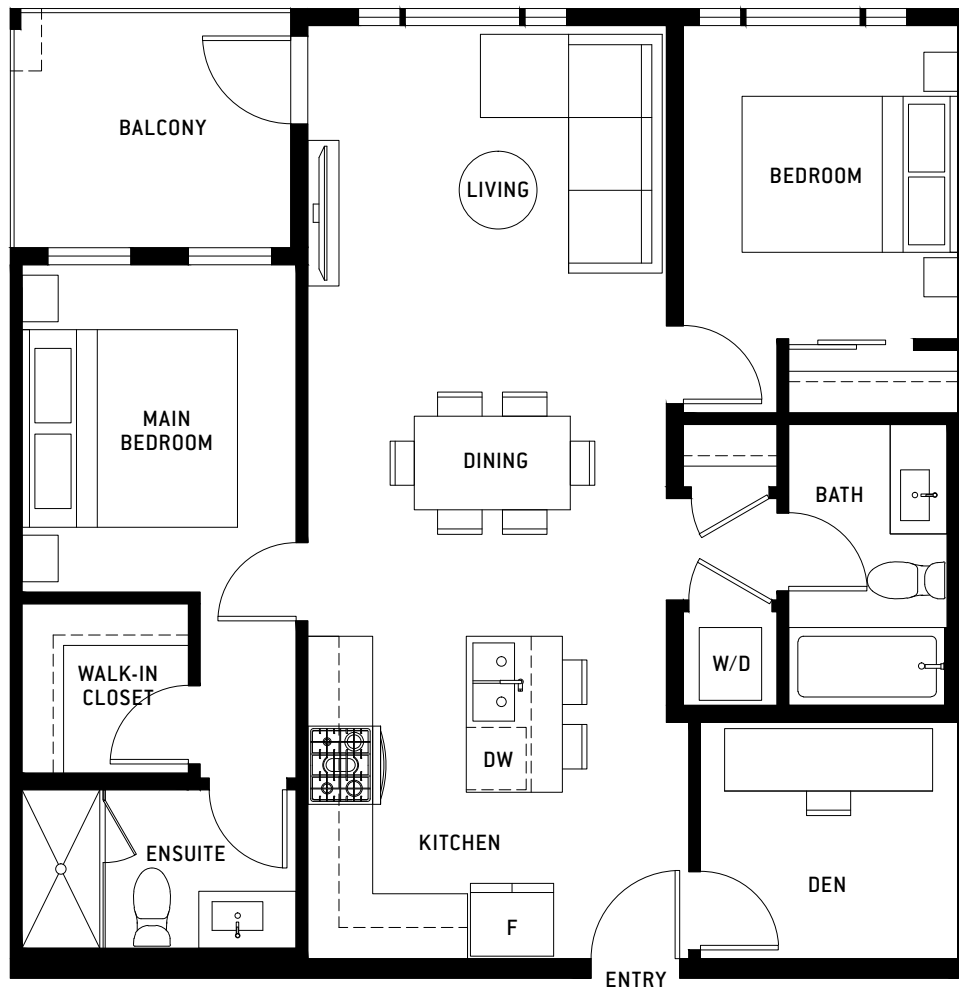
BASTILLE

PLAN E 4

2 Bed + Den, 2 Bath

Interior: 883 Sq Ft / Exterior: 69 Sq Ft / Total: 952 Sq Ft

FRENCH-INSPIRED LIVING



PORTE.CA/BASTILLE

The developer reserves the right to modify or change plans, specifications, finishes and features without notice. Sizes are approximate and subject to change. E&OE.

MAGNUM

porte
homes

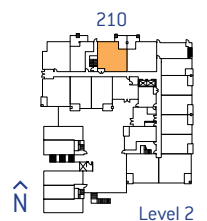
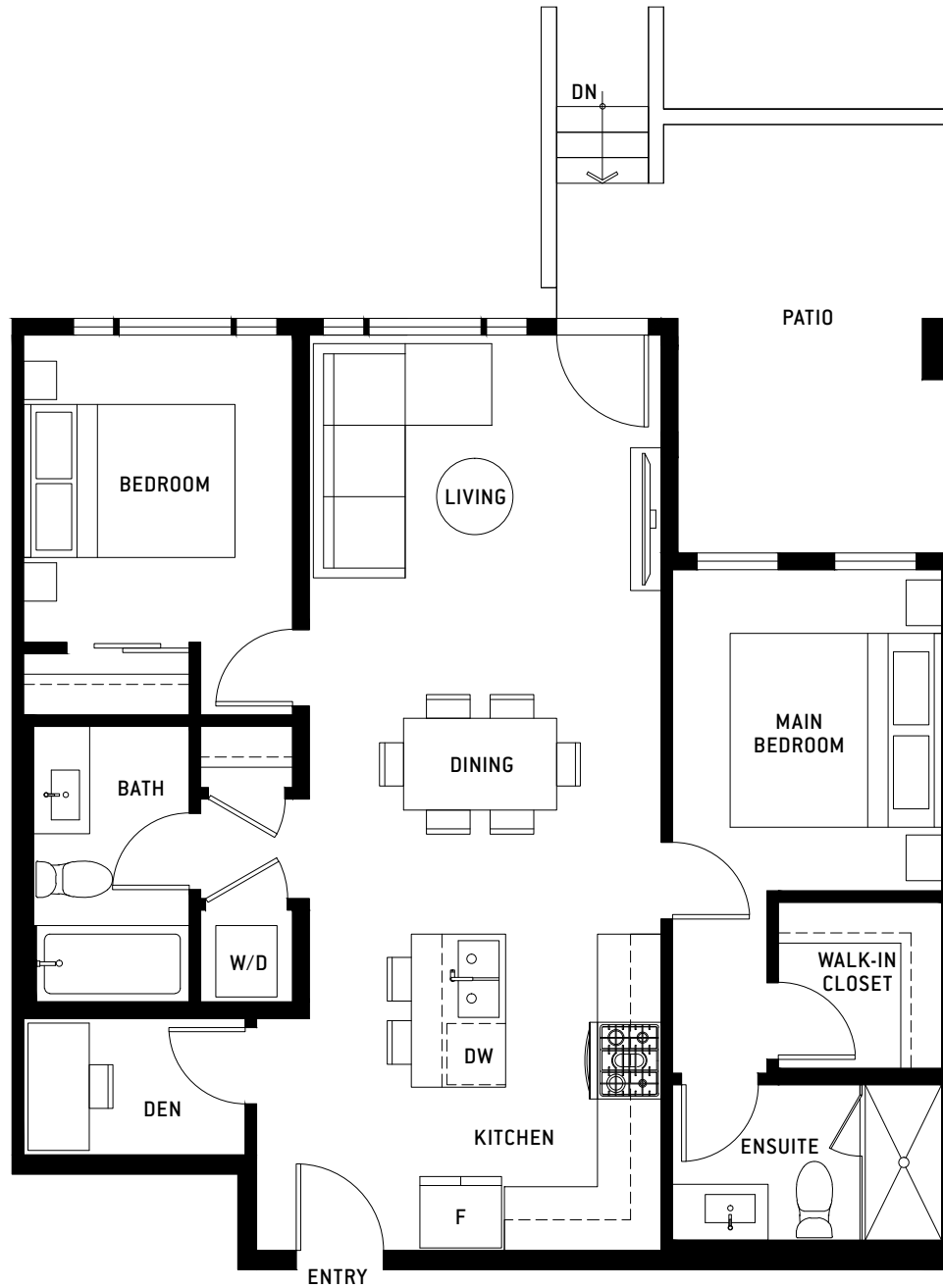
BASTILLE

PLAN E5*

2 Bed + Den, 2 Bath

Interior: 860 Sq Ft / Exterior: 141 Sq Ft / Total: 1,001 Sq Ft

FRENCH-INSPIRED LIVING



PORTE.CA/BASTILLE

The developer reserves the right to modify or change plans, specifications, finishes and features without notice. Sizes are approximate and subject to change. E&OE.

MAGNUM

porte
homes

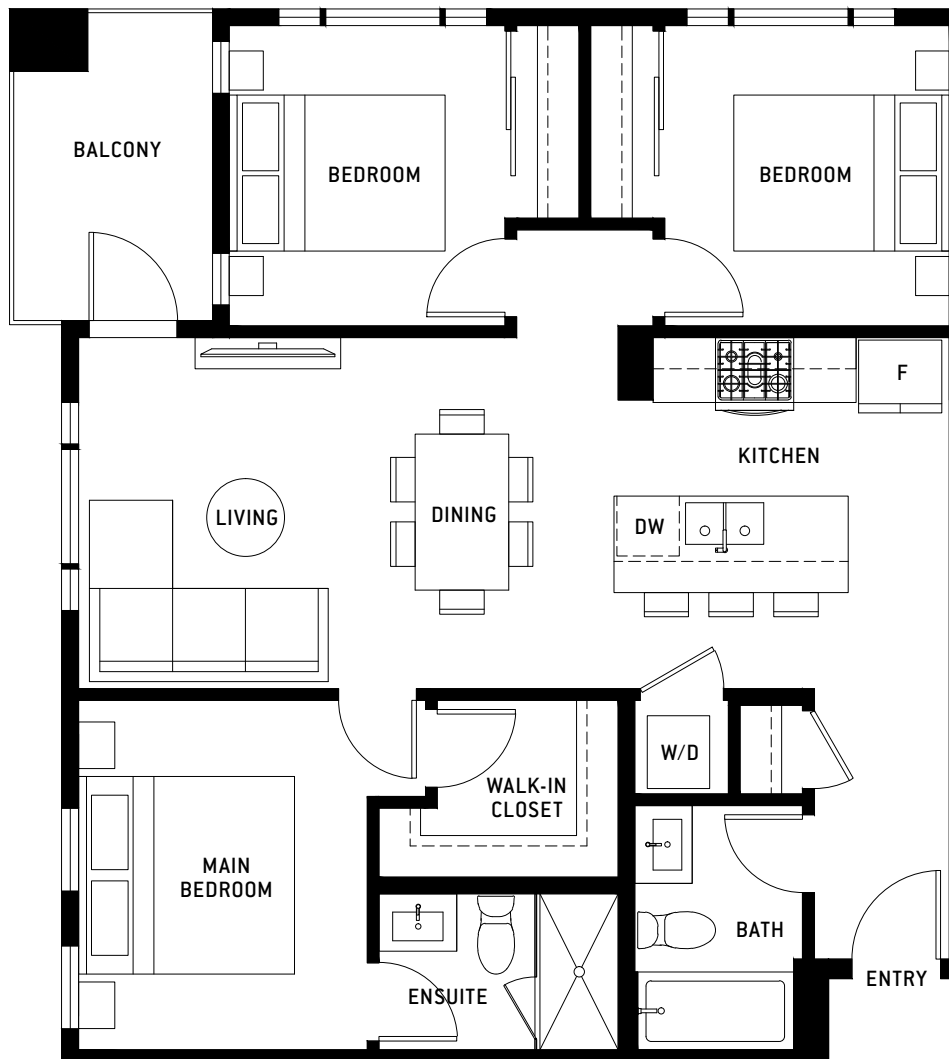
BASTILLE

PLAN F1

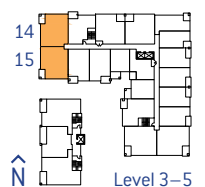
3 Bed, 2 Bath

Interior: 915 Sq Ft / Exterior: 64 Sq Ft / Total: 979 Sq Ft

FRENCH-INSPIRED LIVING



315, 415, 515 are mirror plans



PORTE.CA/BASTILLE

The developer reserves the right to modify or change plans, specifications, finishes and features without notice. Sizes are approximate and subject to change. E&OE.

MAGNUM

porte
homes

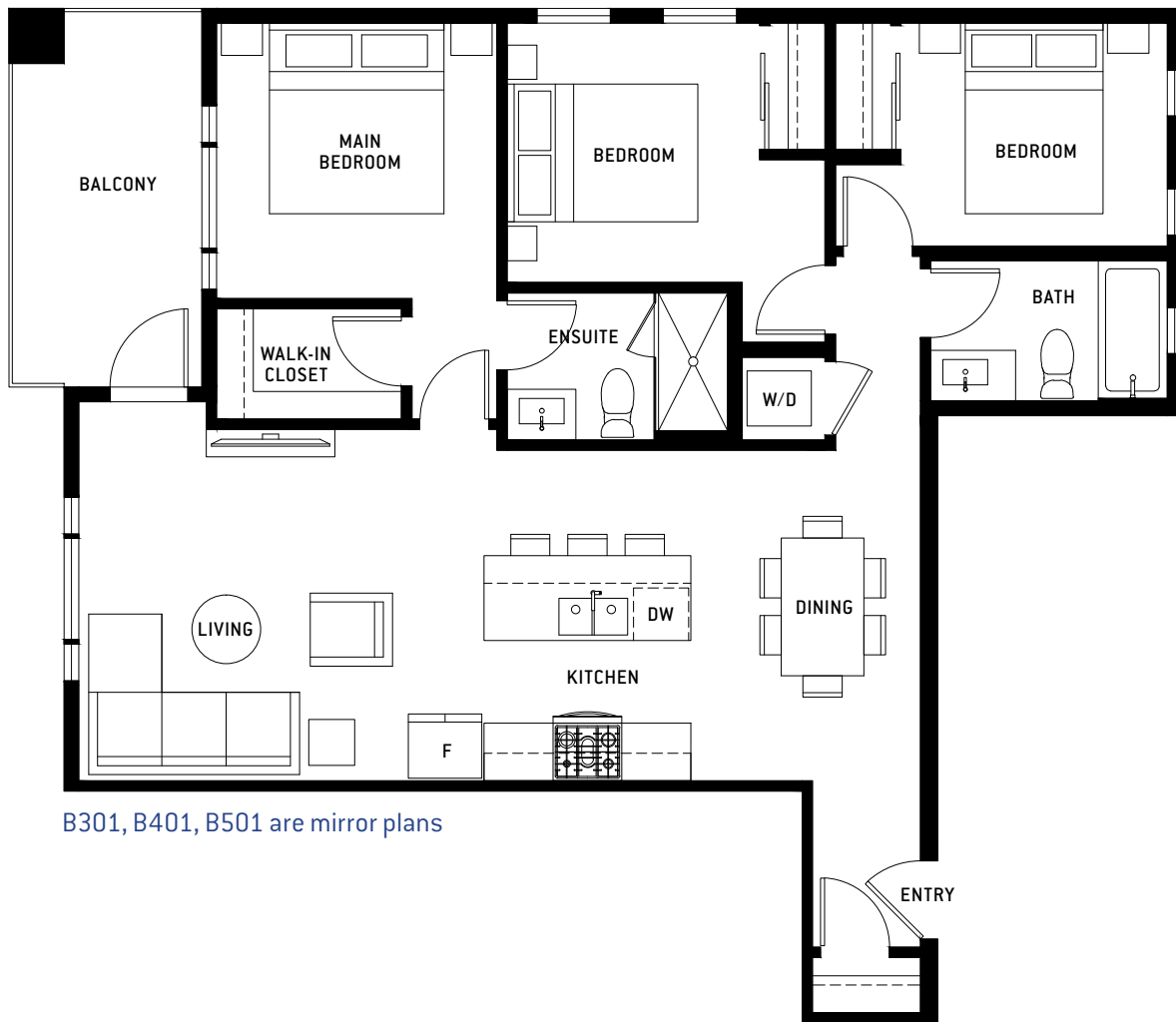
BASTILLE

PLAN H

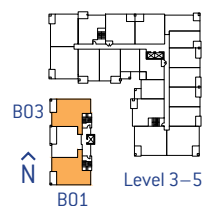
3 Bed, 2 Bath

Interior: 1,001 Sq Ft / Exterior: 96 Sq Ft / Total: 1,097 Sq Ft

FRENCH-INSPIRED LIVING



B301, B401, B501 are mirror plans



PORTE.CA/BASTILLE

The developer reserves the right to modify or change plans, specifications, finishes and features without notice. Sizes are approximate and subject to change. E&OE.

MAGNUM

porte
homes