

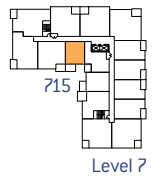
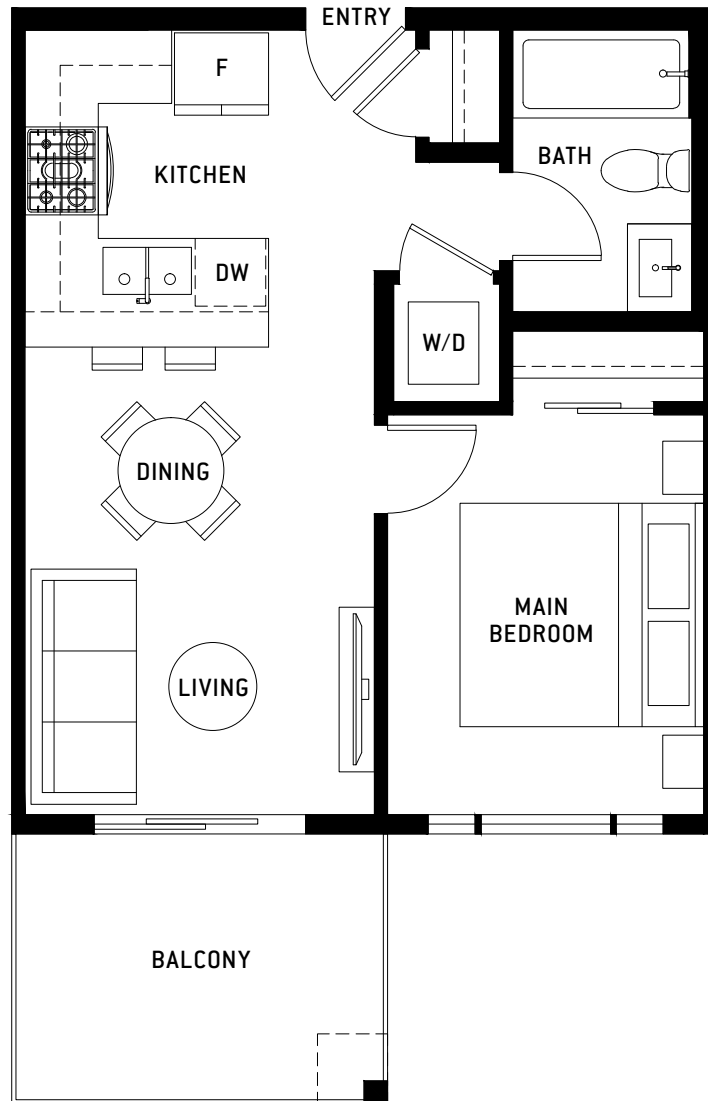
BASTILLE

PLAN A 1

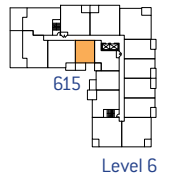
1 Bed, 1 Bath

Interior: 466 Sq Ft / Exterior: 81 Sq Ft / Total: 547 Sq Ft

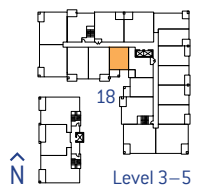
FRENCH-INSPIRED LIVING



Level 7



Level 6



Level 3-5

PORTE.CA/BASTILLE

The developer reserves the right to modify or change plans, specifications, finishes and features without notice. Sizes are approximate and subject to change. E&OE.

porte
homes

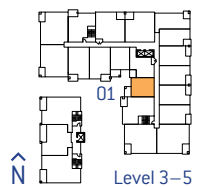
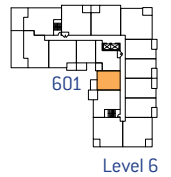
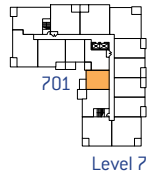
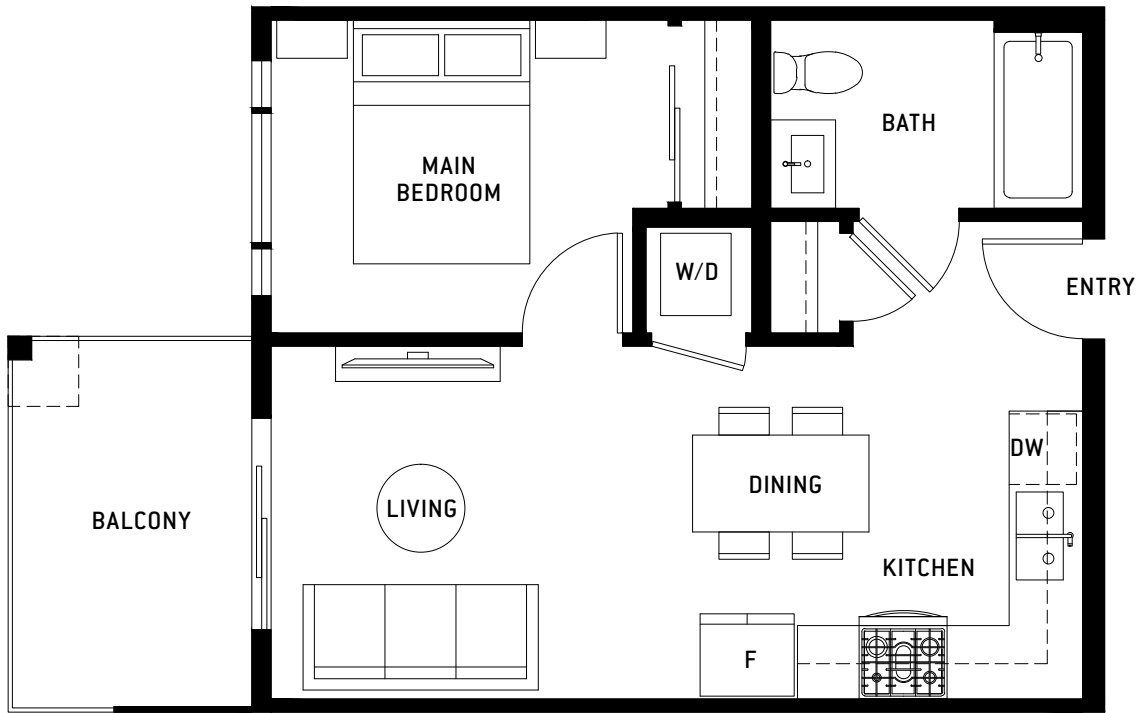
BASTILLE

PLAN A1*

1 Bed, 1 Bath

Interior: 481 Sq Ft / Exterior: 74 Sq Ft / Total: 555 Sq Ft

FRENCH-INSPIRED LIVING



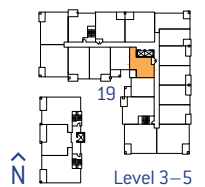
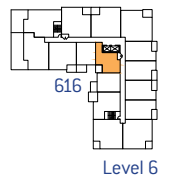
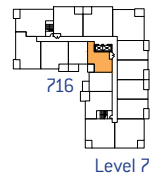
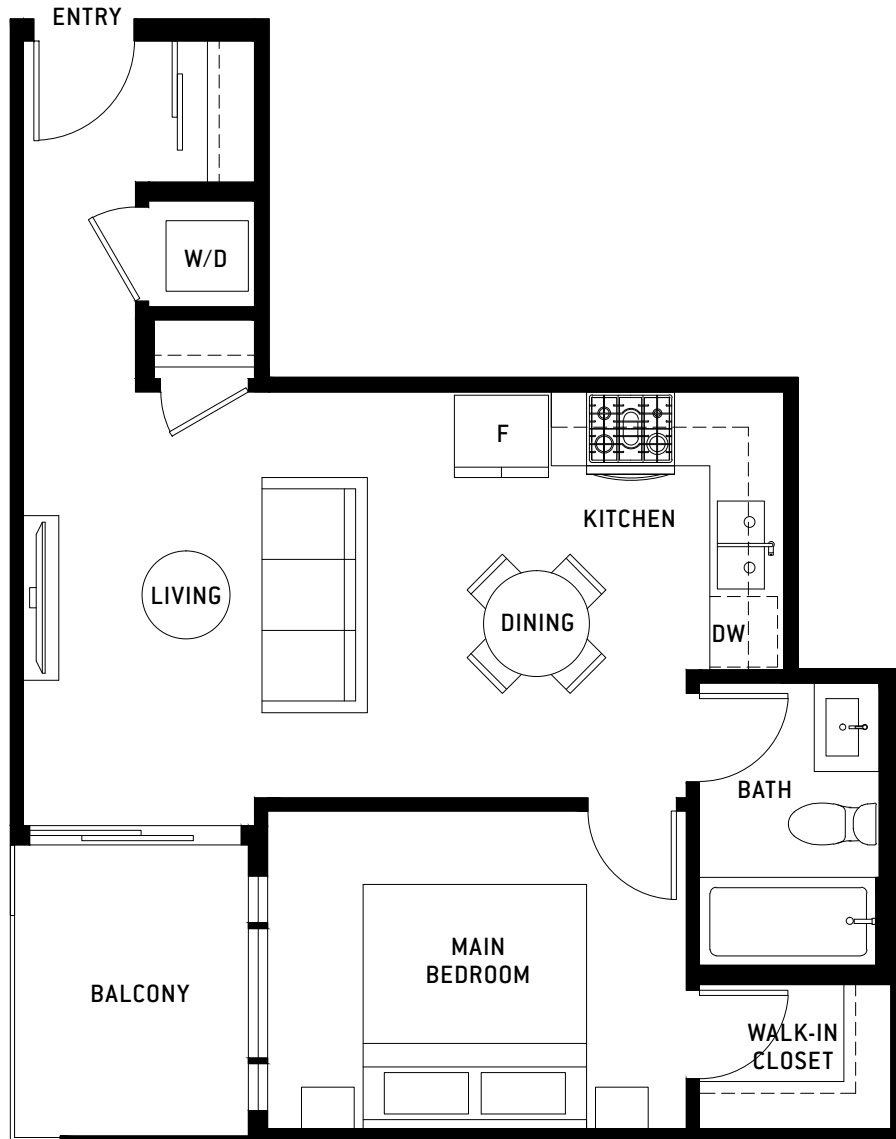
BASTILLE

PLAN A 2

1 Bed, 1 Bath

Interior: 544 Sq Ft / Exterior: 57 Sq Ft / Total: 601 Sq Ft

FRENCH-INSPIRED LIVING



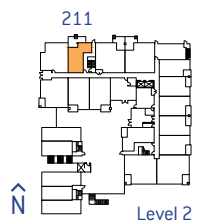
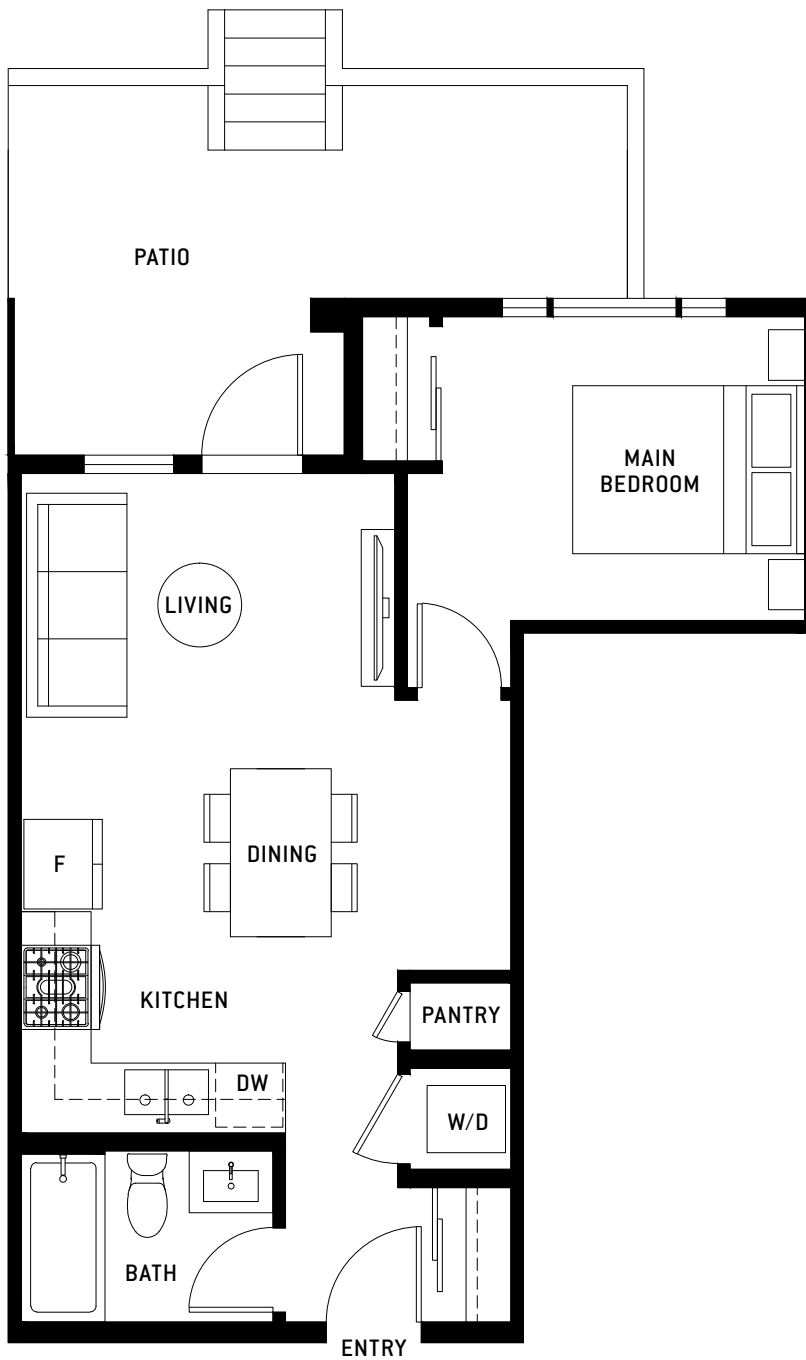
BASTILLE

PLAN A 3

1 Bed, 1 Bath

Interior: 516 Sq Ft / Exterior: 90 Sq Ft / Total: 606 Sq Ft

FRENCH-INSPIRED LIVING



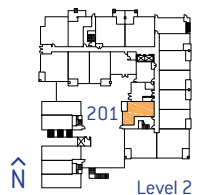
BASTILLE

PLAN A3*

1 Bed, 1 Bath

Interior: 618 Sq Ft / Exterior: 58 Sq Ft / Total: 676 Sq Ft

FRENCH-INSPIRED LIVING



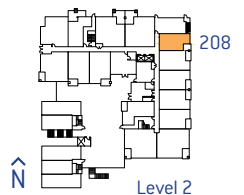
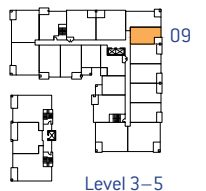
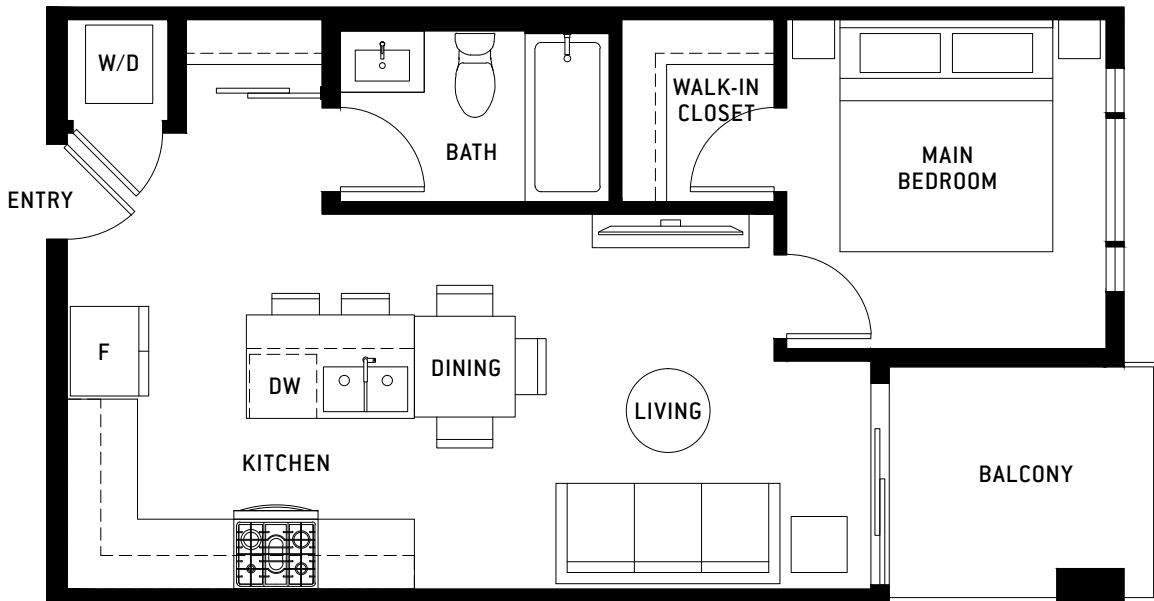
BASTILLE

PLAN A 4

1 Bed, 1 Bath

Interior: 518 Sq Ft / Exterior: 56 Sq Ft / Total: 574 Sq Ft

FRENCH-INSPIRED LIVING



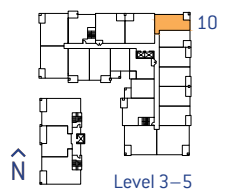
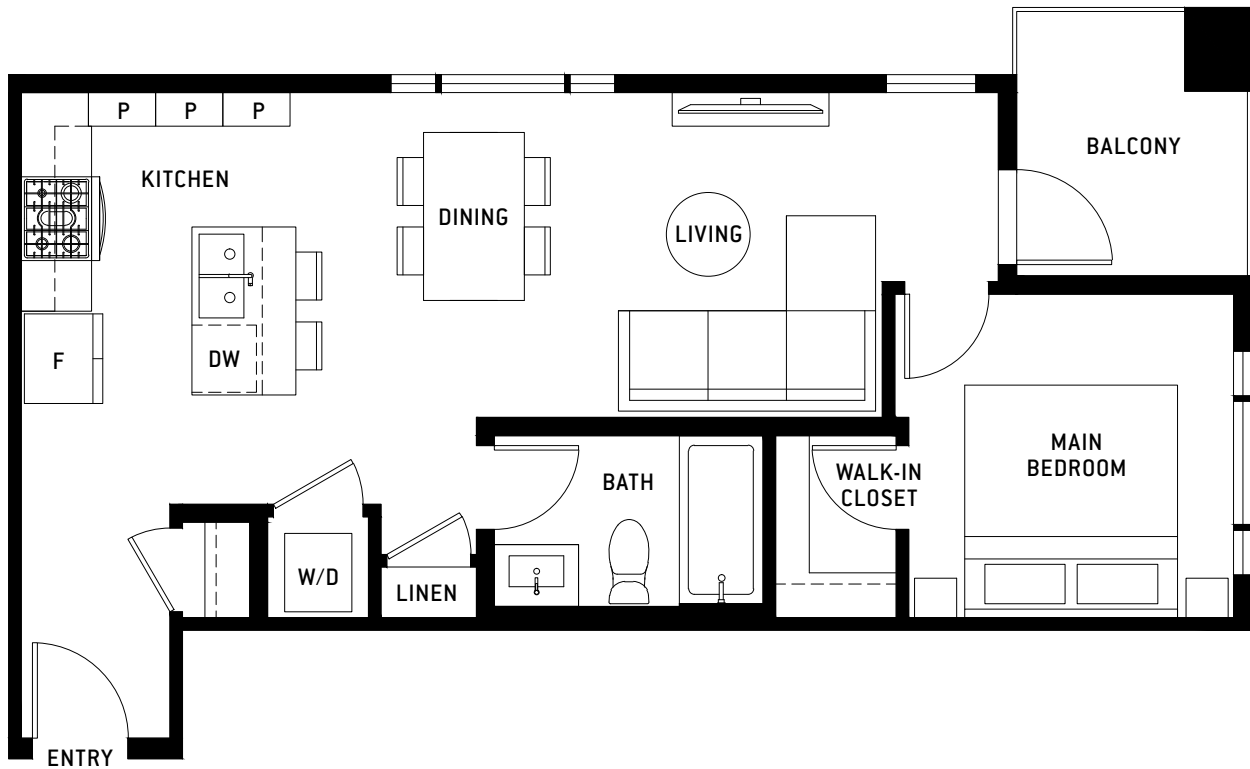
BASTILLE

PLAN A 5

1 Bed, 1 Bath

Interior: 589 Sq Ft / Exterior: 56 Sq Ft / Total: 645 Sq Ft

FRENCH-INSPIRED LIVING



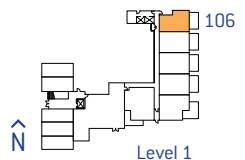
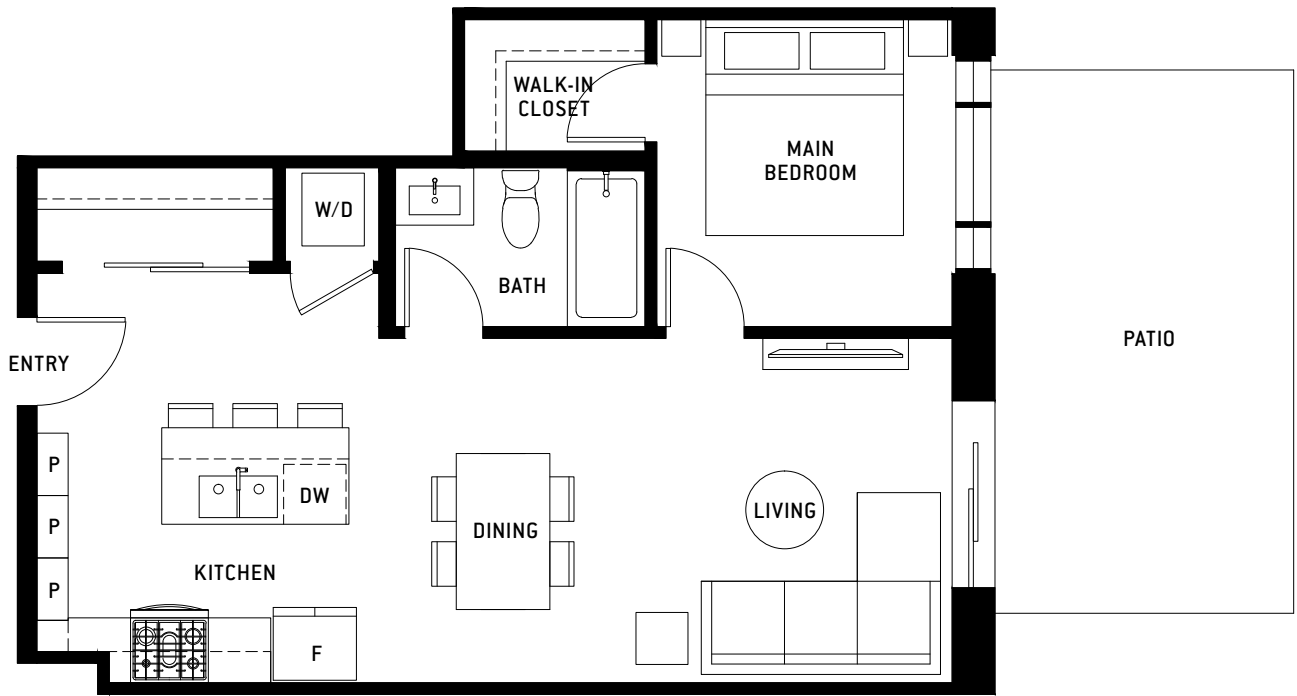
BASTILLE

PLAN B 2 *

1 Bed, 1 Bath

Interior: 616 Sq Ft / Exterior: 122 Sq Ft / Total: 738 Sq Ft

FRENCH-INSPIRED LIVING



PORTE.CA/BASTILLE

The developer reserves the right to modify or change plans, specifications, finishes and features without notice. Sizes are approximate and subject to change. E&OE.

porte
homes

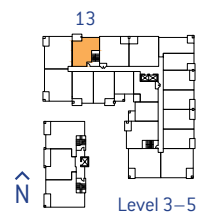
BASTILLE

PLAN B 1

1 Bed + Den, 1 Bath

Interior: 656 Sq Ft / Exterior: 70 Sq Ft / Total: 726 Sq Ft

FRENCH-INSPIRED LIVING



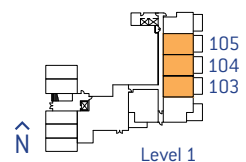
BASTILLE

PLAN B 2

1 Bed + Den, 1 Bath

Interior: 681 Sq Ft / Exterior: 130 Sq Ft / Total: 811 Sq Ft

FRENCH-INSPIRED LIVING



PORTE.CA/BASTILLE

The developer reserves the right to modify or change plans, specifications, finishes and features without notice. Sizes are approximate and subject to change. E&OE.

porte
homes

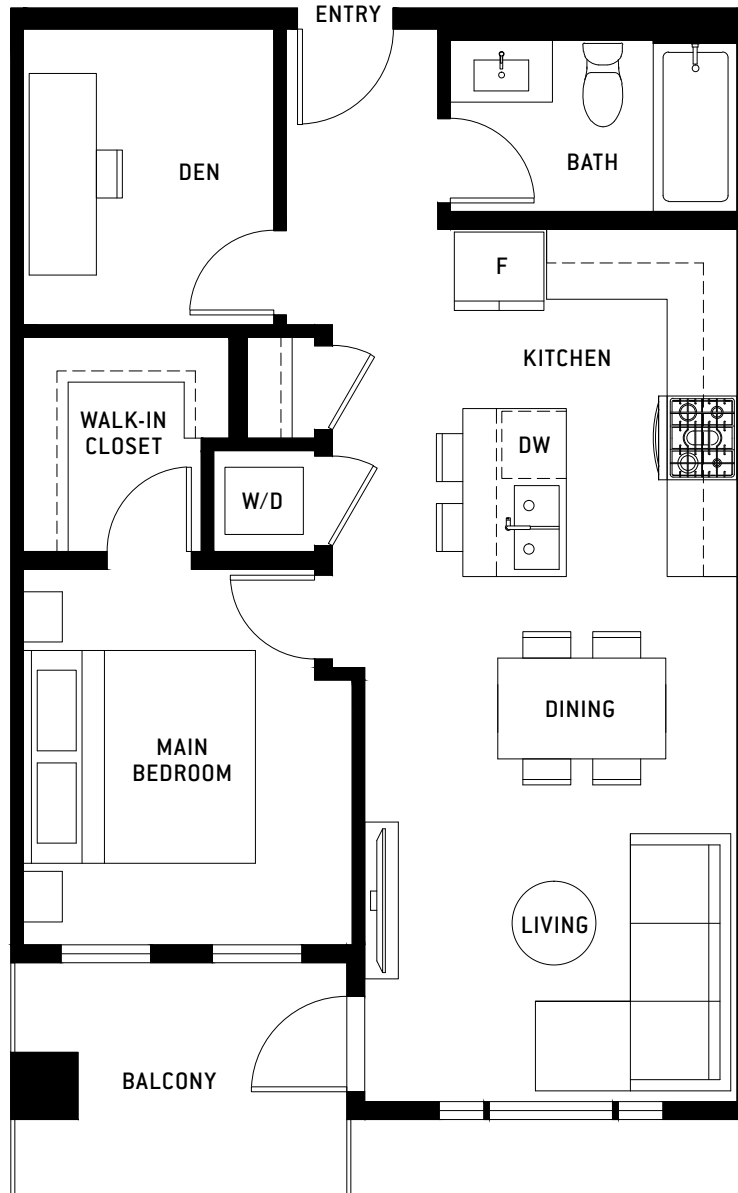
BASTILLE

PLAN B3

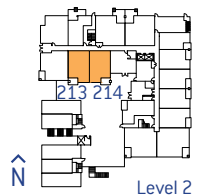
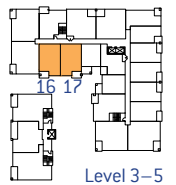
1 Bed + Den, 1 Bath

Interior: 678 Sq Ft / Exterior: 70 Sq Ft / Total: 748 Sq Ft

FRENCH-INSPIRED LIVING



214, 317, 417, 517 are mirror plans



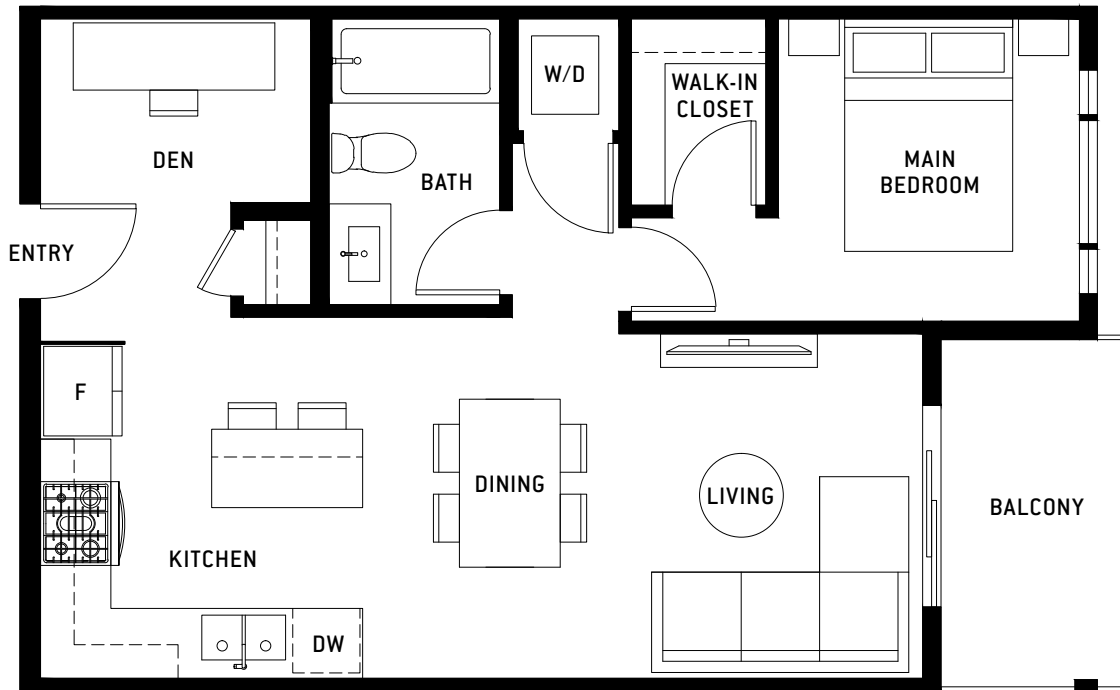
BASTILLE

PLAN B 4

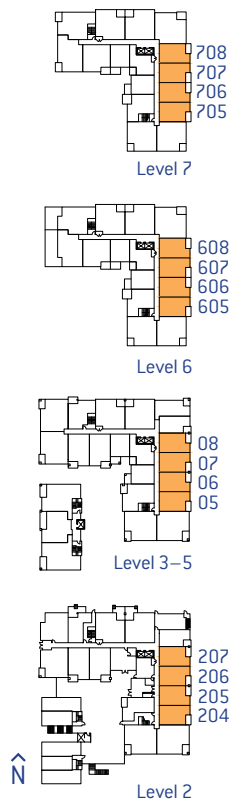
1 Bed + Den, 1 Bath

Interior: 603 Sq Ft / Exterior: 59 Sq Ft / Total: 662 Sq Ft

FRENCH-INSPIRED LIVING



204, 207, 306, 308, 406, 408, 506, 508, 606, 608, 706, 708 are mirror plans



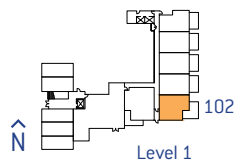
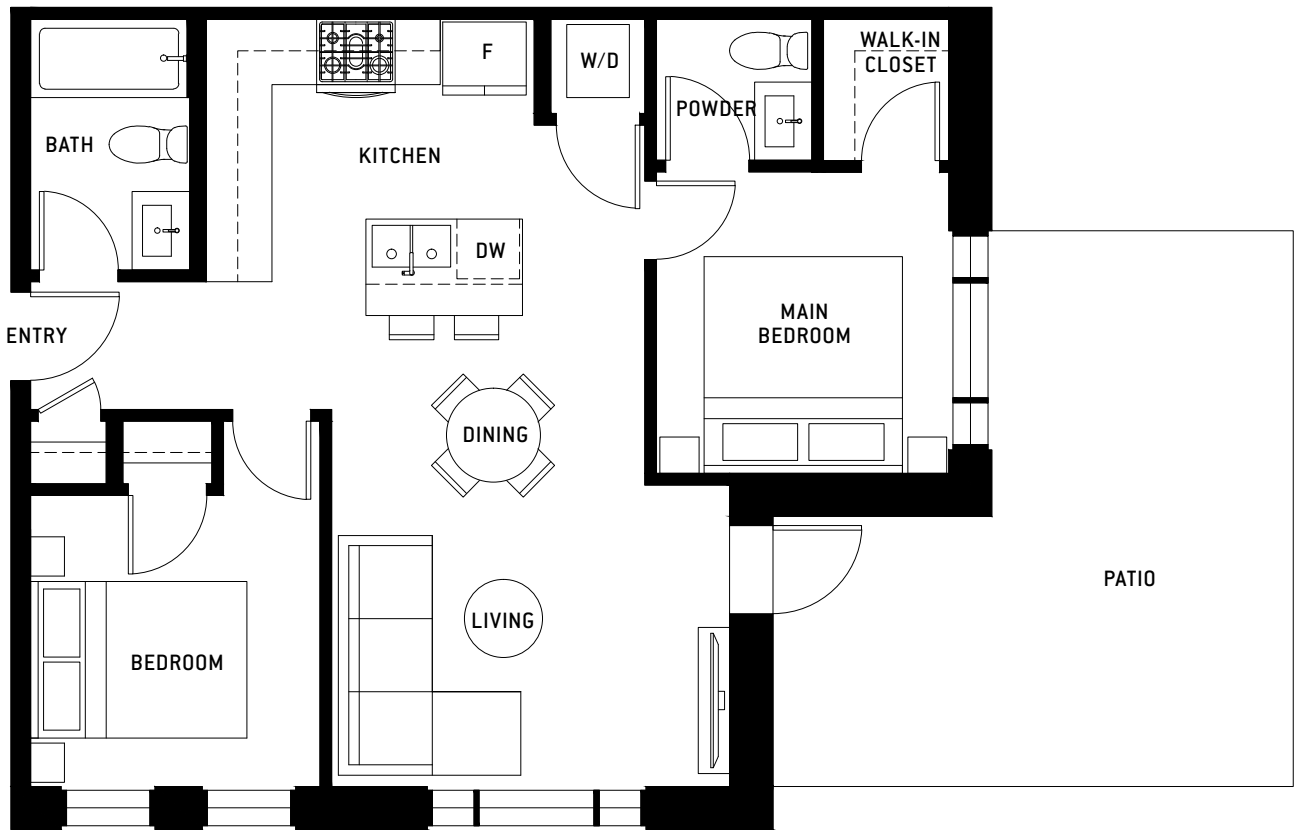
BASTILLE

PLAN C 1

2 Bed, 1 Bath

Interior: 735 Sq Ft / Exterior: 193 Sq Ft / Total: 928 Sq Ft

FRENCH-INSPIRED LIVING



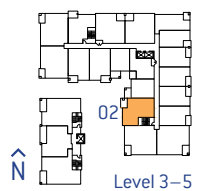
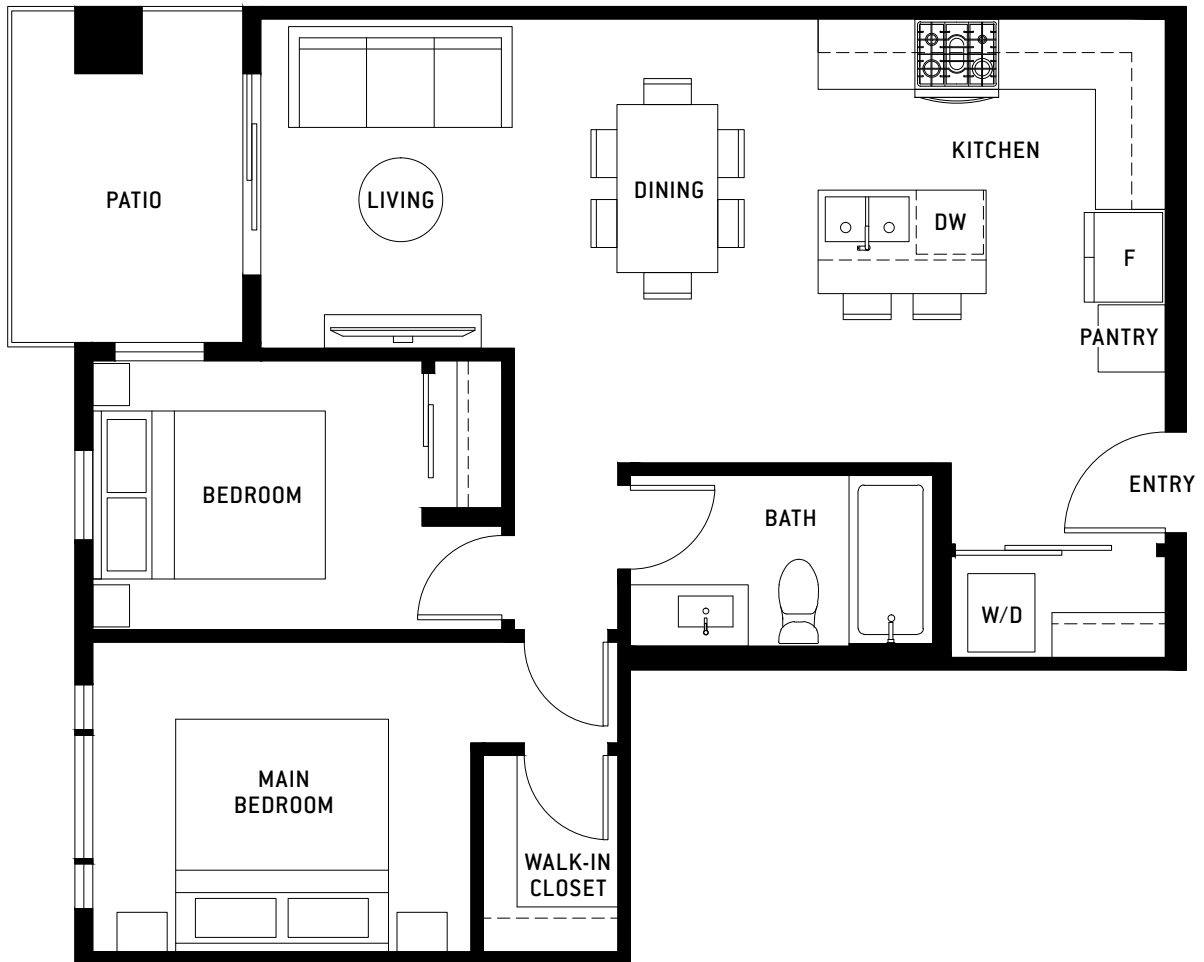
BASTILLE

PLAN C2

2 Bed, 1 Bath

Interior: 750 Sq Ft / Exterior: 70 Sq Ft / Total: 820 Sq Ft

FRENCH-INSPIRED LIVING



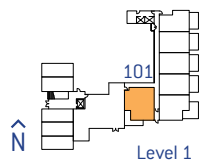
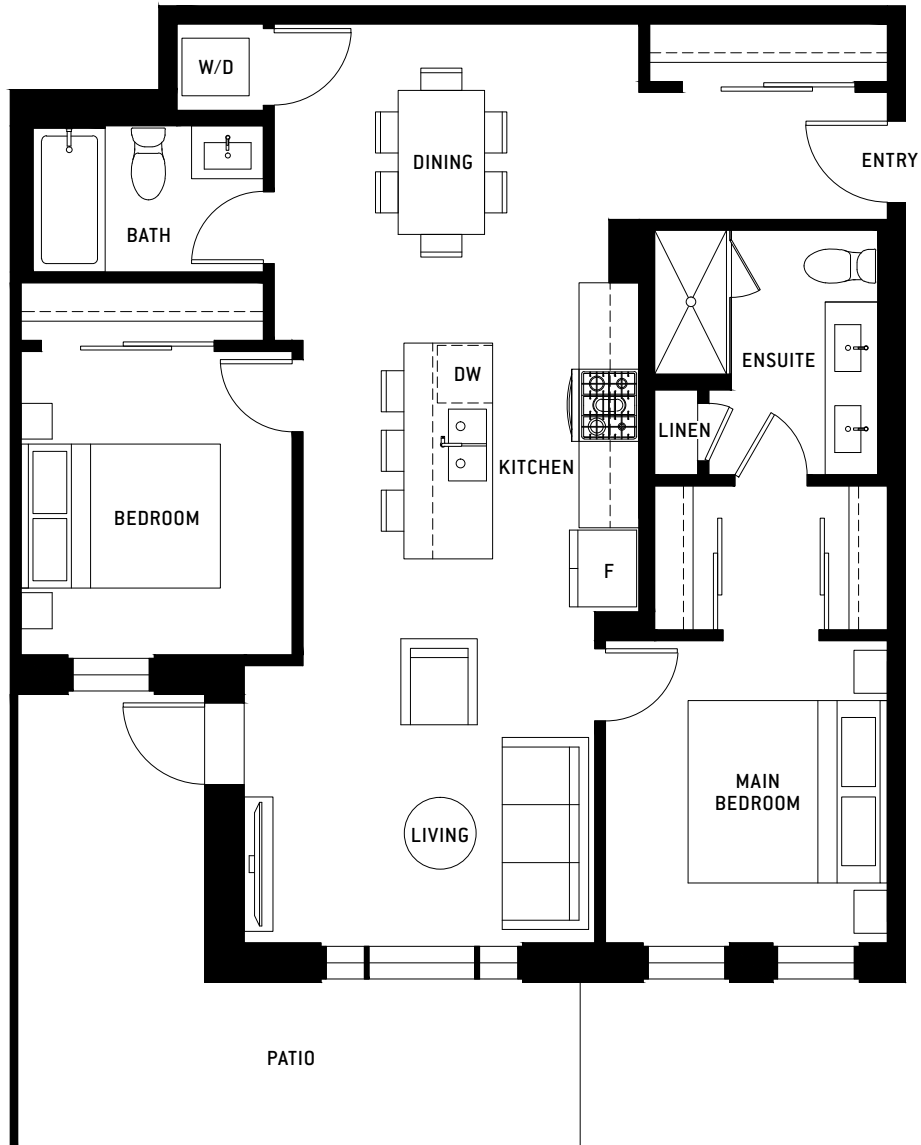
BASTILLE

PLAN D 4

2 Bed, 2 Bath

Interior: 954 Sq Ft / Exterior: 112 Sq Ft / Total: 1066 Sq Ft

FRENCH-INSPIRED LIVING



BASTILLE

PLAN E 1

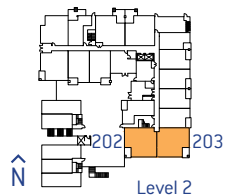
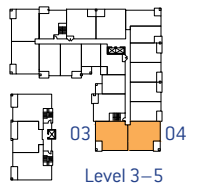
2 Bed + Den, 2 Bath

Interior: 948 Sq Ft / Exterior: 75 Sq Ft / Total: 1023 Sq Ft

FRENCH-INSPIRED LIVING



202, 303, 403, 503 are mirror plans



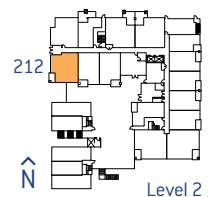
BASTILLE

PLAN E3

2 Bed + Den, 2 Bath

Interior: 819 Sq Ft / Exterior: 65 Sq Ft / Total: 884 Sq Ft

FRENCH-INSPIRED LIVING



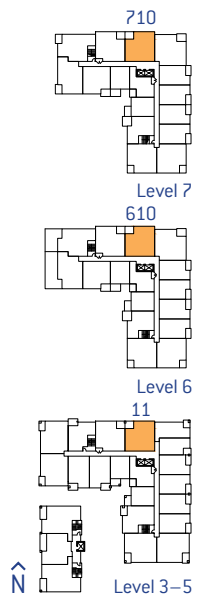
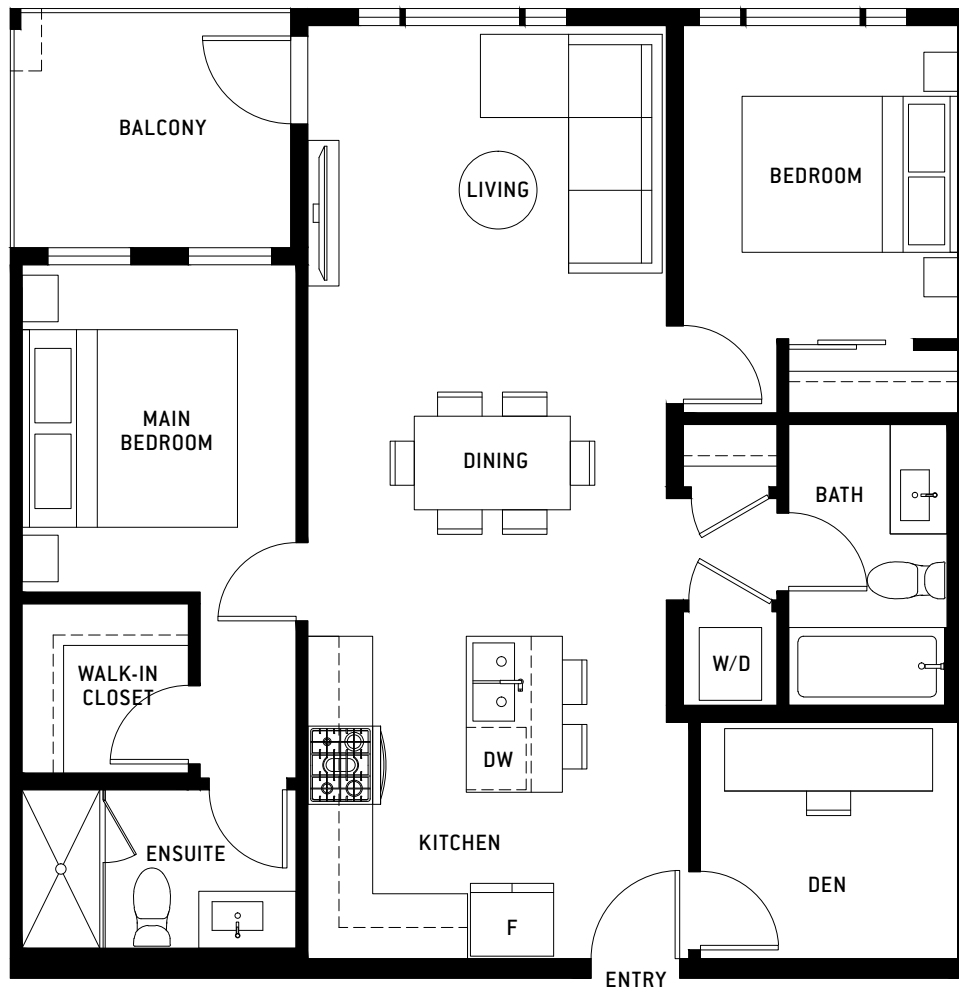
BASTILLE

PLAN E 4

2 Bed + Den, 2 Bath

Interior: 884 Sq Ft / Exterior: 68 Sq Ft / Total: 952 Sq Ft

FRENCH-INSPIRED LIVING



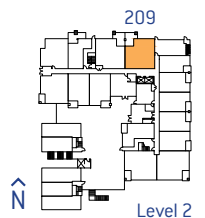
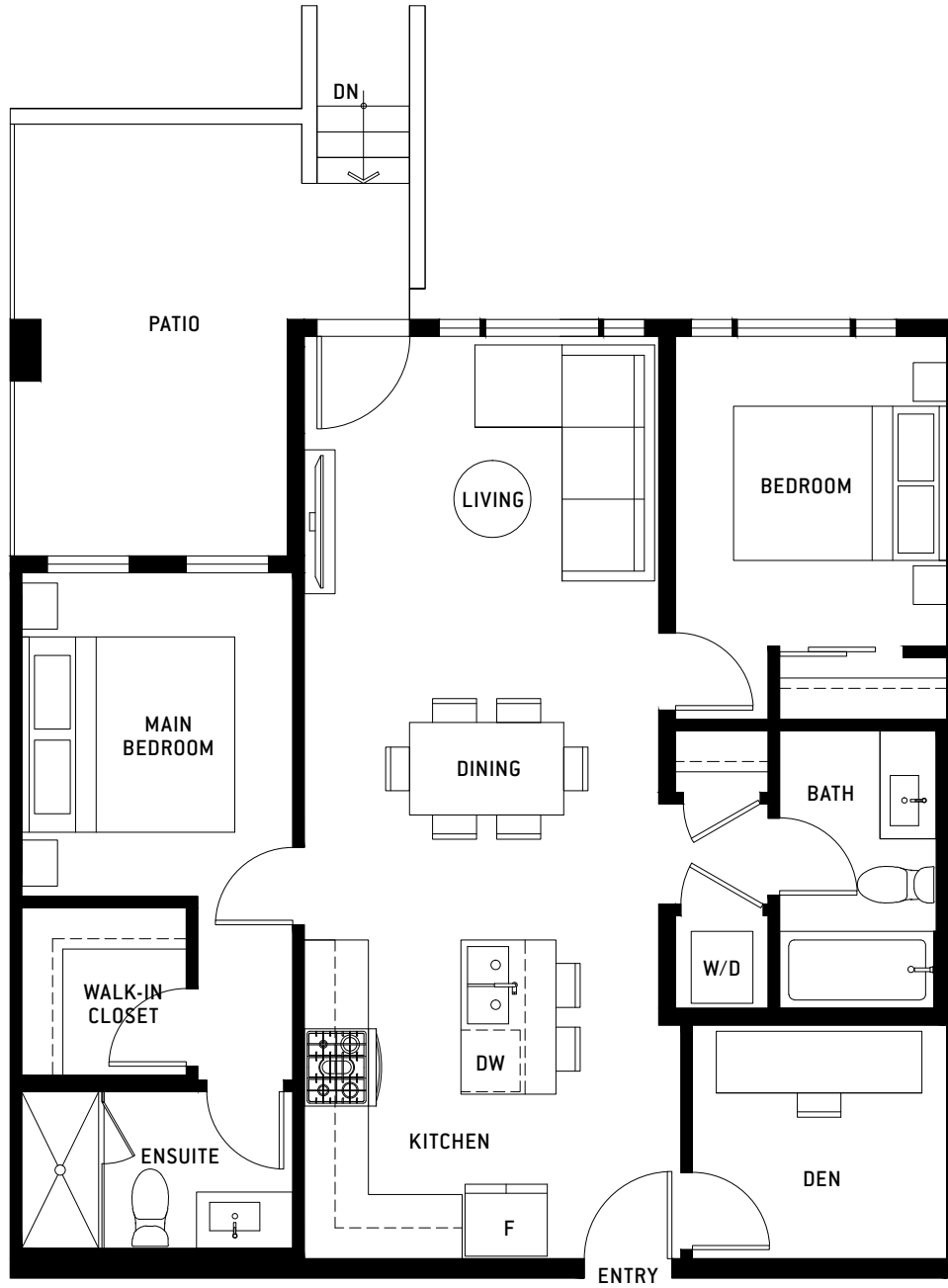
BASTILLE

PLAN E4*

2 Bed + Den, 2 Bath

Interior: 884 Sq Ft / Exterior: 141 Sq Ft / Total: 1025 Sq Ft

FRENCH-INSPIRED LIVING



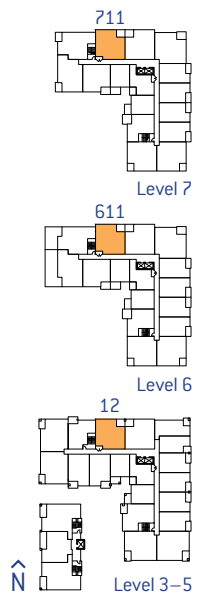
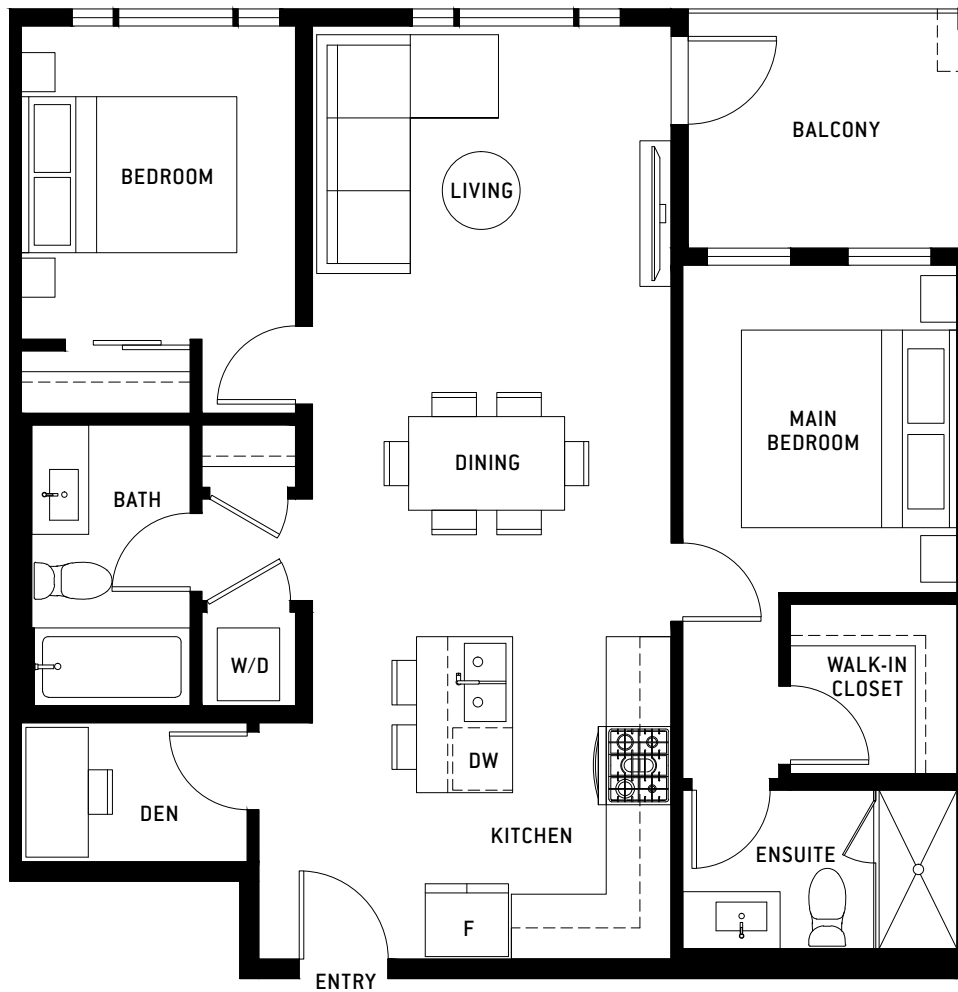
BASTILLE

PLAN E5

2 Bed + Den, 2 Bath

Interior: 860 Sq Ft / Exterior: 68 Sq Ft / Total: 928 Sq Ft

FRENCH-INSPIRED LIVING



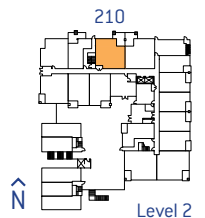
BASTILLE

PLAN E5*

2 Bed + Den, 2 Bath

Interior: 860 Sq Ft / Exterior: 141 Sq Ft / Total: 1001 Sq Ft

FRENCH-INSPIRED LIVING



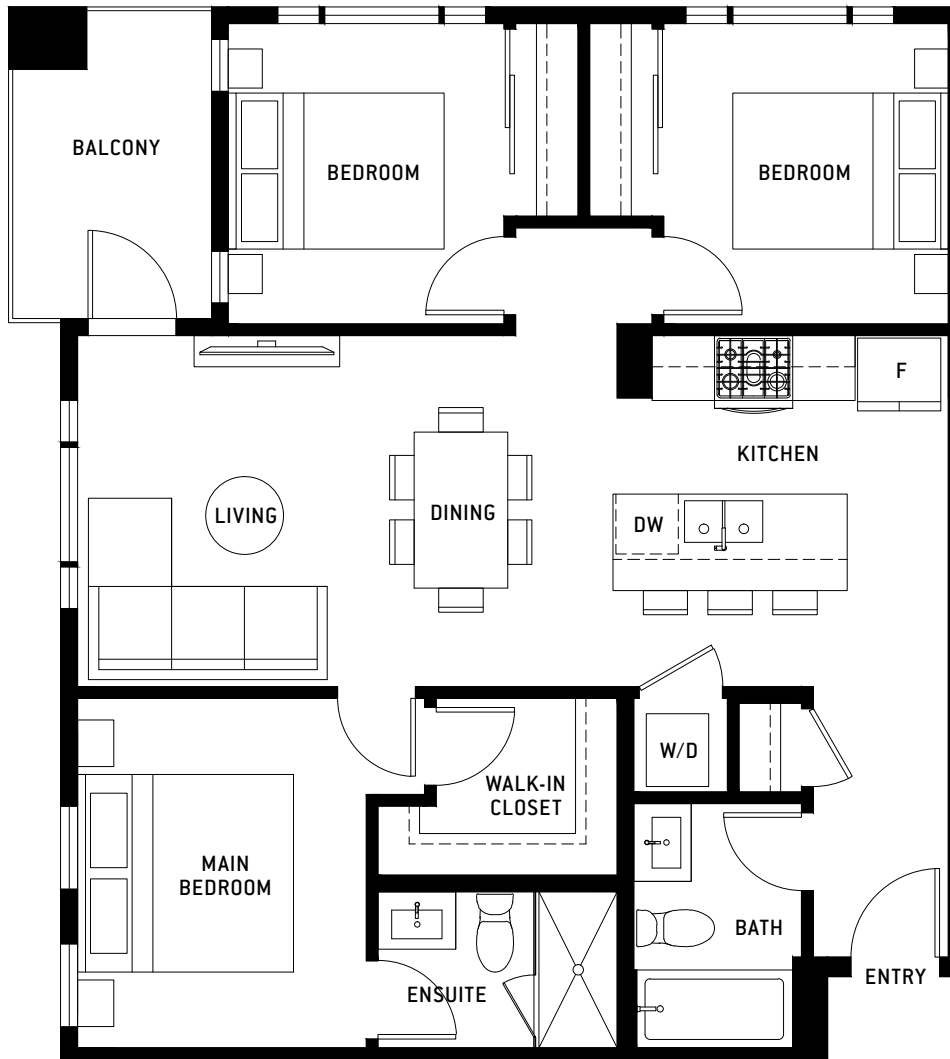
BASTILLE

PLAN F 1

3 Bed, 2 Bath

Interior: 913 Sq Ft / Exterior: 66 Sq Ft / Total: 979 Sq Ft

FRENCH-INSPIRED LIVING



315, 415, 515 are mirror plans

