

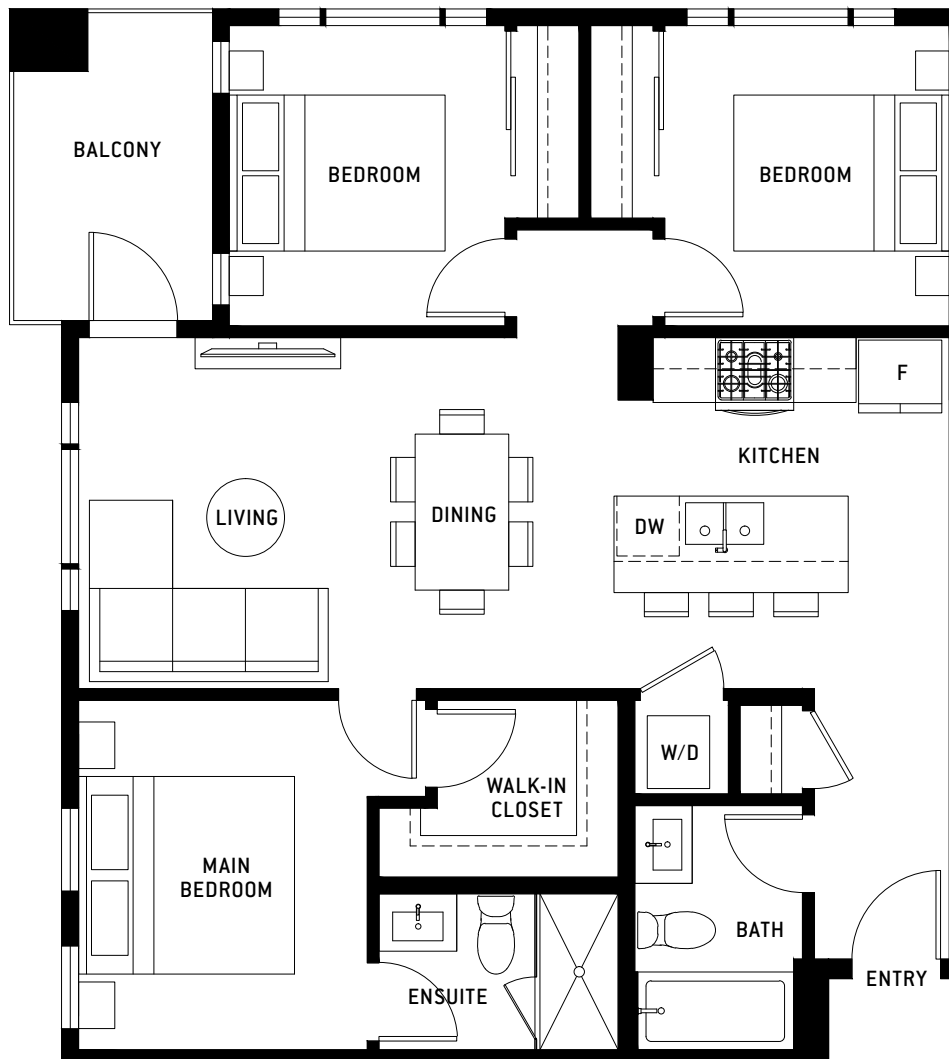
# BASTILLE

## PLAN F1

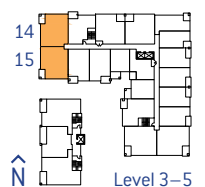
3 Bed, 2 Bath

Interior: 915 Sq Ft / Exterior: 64 Sq Ft / Total: 979 Sq Ft

FRENCH-INSPIRED LIVING



315, 415, 515 are mirror plans



PORTE.CA/BASTILLE

The developer reserves the right to modify or change plans, specifications, finishes and features without notice. Sizes are approximate and subject to change. E&OE.

porte<sup>7</sup>  
homes